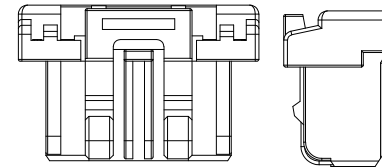
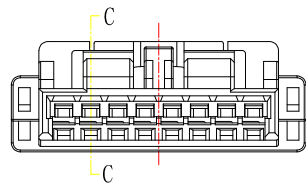
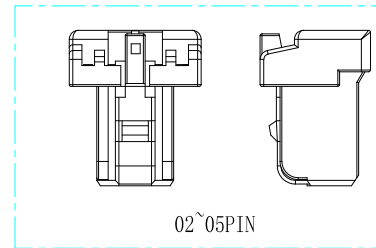
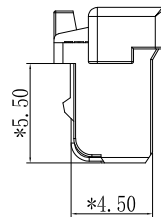
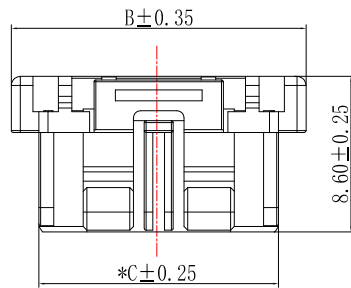
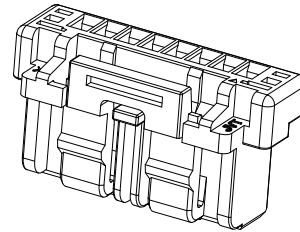
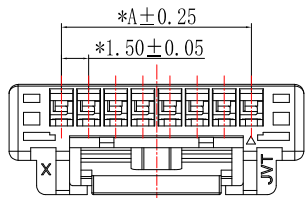
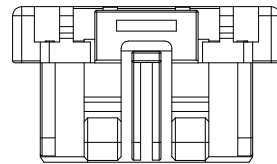
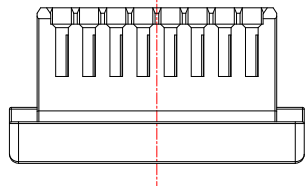


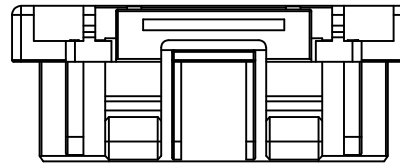
RoHS



06PIN



07~11PIN



12~15PIN

■ SPECIFICATIONS :

- Voltage Rating: 100V AC / DC
- Current Rating: 2A AC / DC
- Withstanding Voltage: 500V AC/minute
- Temperature Range: -40℃~+105℃
- Insulation Resistance: 500MΩ Min.
- Contact Resistance: 20mΩ Max.
- *Suitable JVT1503T series Terminal
- JVT1503W series Wafer

■ *Material:

Material: PA66 UL 94V-0

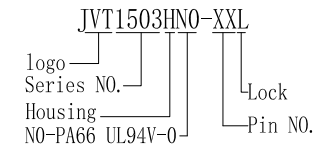
Color:Natural

■ Packing specifications:

2~10P 2,000 pcs/bag

11P以上 1,000 pcs/bag

*is the key control size



Poles	Dimensions (mm)			Poles	Dimensions (mm)		
	A	B	C		A	B	C
02	1.50	7.30	4.25	09	12.00	17.80	14.75
03	3.00	8.80	5.75	10	13.50	19.30	16.25
04	4.50	10.30	7.25	11	15.00	20.80	17.75
05	6.00	11.80	8.75	12	16.50	22.30	19.25
06	7.50	13.30	10.25	13	18.00	23.80	20.75
07	9.00	14.80	11.75	14	19.50	25.30	22.25
08	10.50	16.30	13.25	15	21.00	26.80	23.75

				GENERAL TOLERANCE		Approved by		Check		Design		Standard		1.5mm HSG Lock	
				0 ±0.35		LI		CLYDE		LU		P/N		JVT1503HNO-XXL	
Version		Content of change		Date		Signature		Unit		mm		Scale		Date	
A		B		C		D		E		F		G		H	



20190309

A0