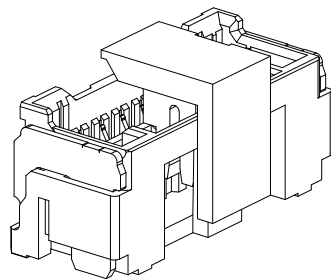
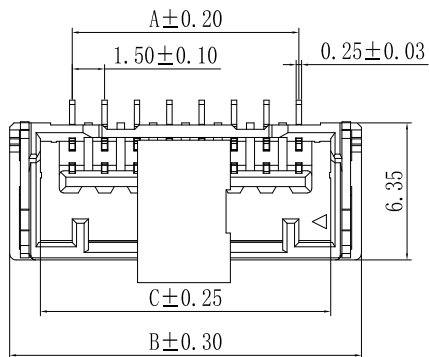


RoHS

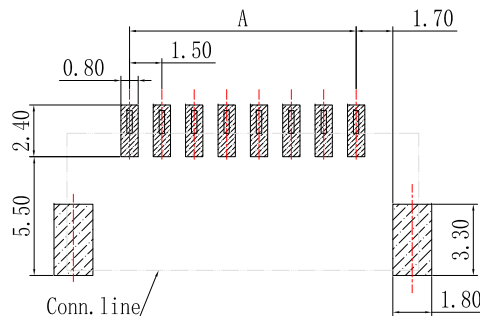
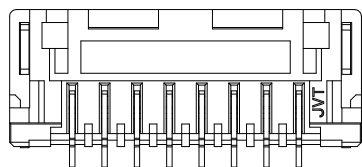
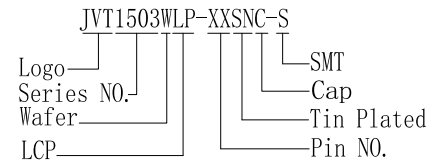
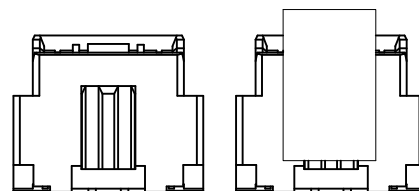
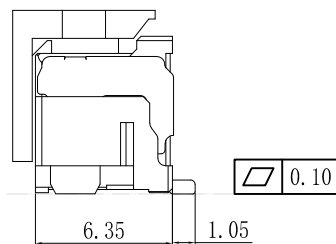
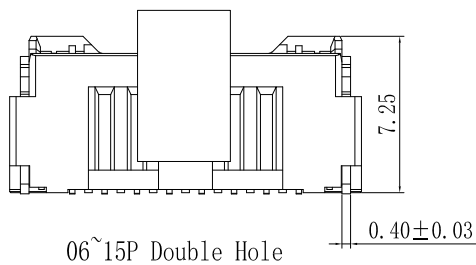


SPECIFICATION

- Voltage rating: 100V AC, DC
- Current Rating: 2A, AC, DC
- Withstand voltage: 500V AC/minute
- Contact resistance: 20mΩ max
- Insulation resistance: 500MΩ min
- Temperature range: -40℃ ~ +105℃

WAFER

- Material: Base, LCP UL94V-0
- Contact area, Brass Tin-plated
- Pin: Phosphor Bronze



Recommended P.C.B Layout
General Tolerance ±0.05

Poles	Dimensions (mm)		
	A	B	C
02	1.50	7.30	4.45
03	3.00	8.80	5.95
04	4.50	10.30	7.45
05	6.00	11.80	8.95
06	7.50	13.30	10.45
07	9.00	14.80	11.95
08	10.50	16.30	13.45
09	12.00	17.80	14.95
10	13.50	19.30	16.45
11	15.00	20.80	17.95
12	16.50	22.30	19.45
13	18.00	23.80	20.95
14	19.50	25.30	22.45
15	21.00	26.80	23.95

Version		Content of change		Date	Signature	<p>GENERAL TOLERANCE</p> <p>0 ±0.35</p> <p>.0 ±0.30</p> <p>.00 ±0.20</p> <p>.000 ±0.10</p>		<p>JVT 乔业连接器</p> <p>JVT CONNECTORS</p> <p>CONNECTORS</p>		Approved by	Check	Design	Standard	1.5mm 180° WAFER SMT Cap				
						Unit	mm	Scale	1:1	Date	20200629	LI	CLYDE	LU	P/N	JVT1503WLP-XXSNC-S		
														Map title	031	Version	A0	