

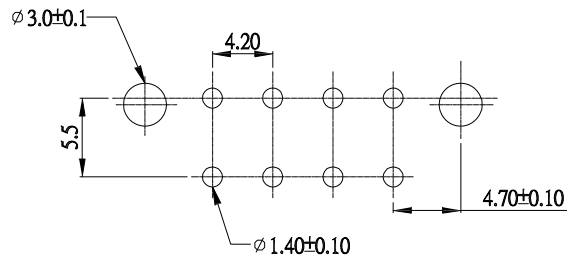
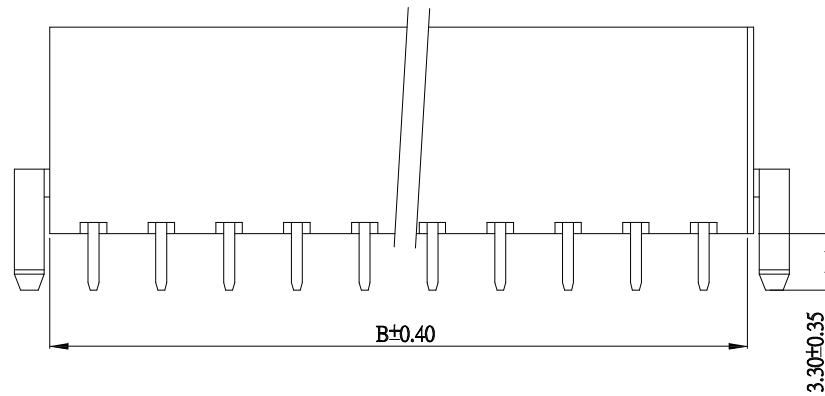
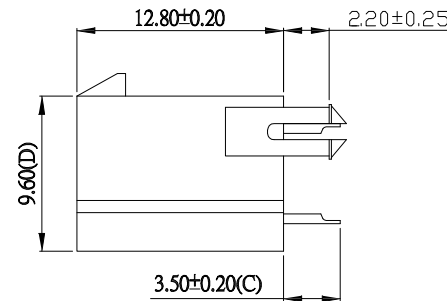
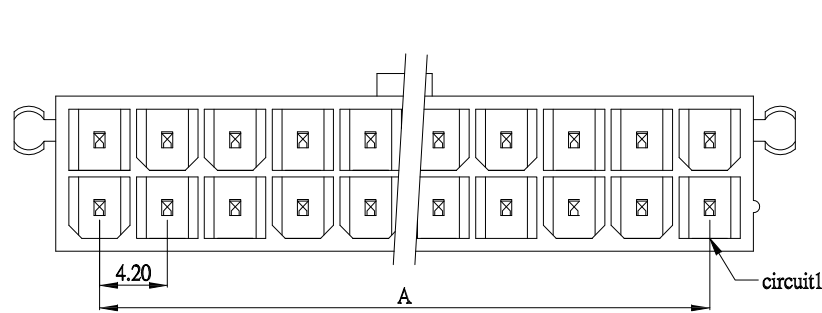
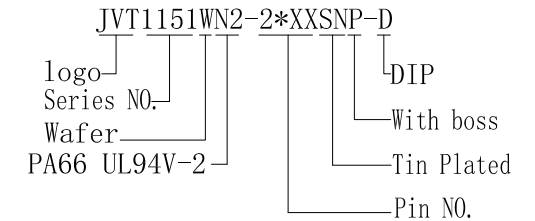
RoHS

SPECIFICATIONS

- Voltage rating: 600V AC/DC
- Current rating: 7A AC/DC
- Withstanding Voltage: 1500V AC/minute
- Insulation resistance: 1000MΩ Min.
- Temperature range: -40°C - +105°C
- Contact resistance: 20mΩ Max.

HOUSING

- Part No.: JVT1151WN0-2*XXSNP-D
- Poles: 2x01-2x12
- Material: PA66 UL94V-2
pin: Brass Tin-plated



P. C. B LAYOUT



circuit	A	B	circuit	A	B
2*1	--	5.40	2*7	25.20	30.60
2*2	4.20	9.60	2*8	29.40	34.80
2*3	8.40	13.80	2*9	33.60	39.00
2*4	12.60	18.00	2*10	37.80	43.20
2*5	16.80	22.20	2*11	42.00	47.40
2*6	21.00	26.40	2*12	46.20	51.60

Version		Content of change		Date	Signature			Unit	mm	Scale	1:1	Date	20150922	Approved by	LI	Check	CLYDE	Design	LU	Standard	P/N	JVT1151WN2-2*XXSNP-D		
																				Map title	010	Version	A0	



4.2mm WAFER 空心针 With boss