

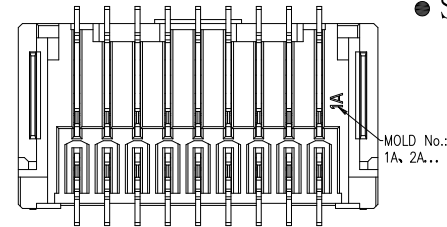
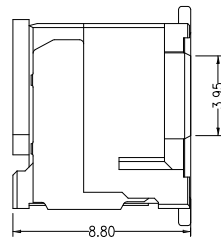
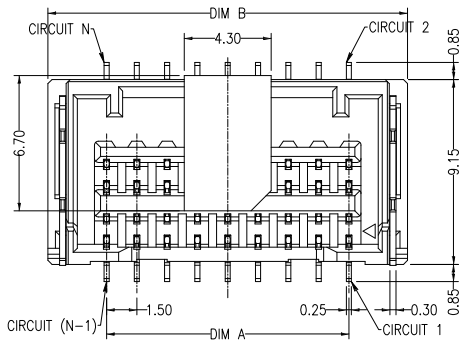
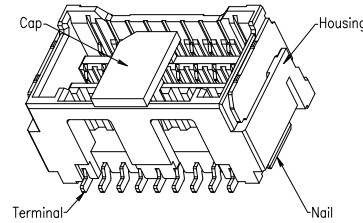
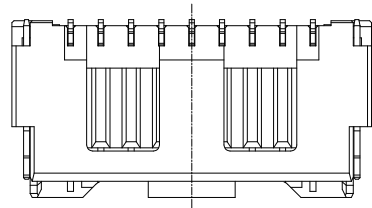
# RoHS

## ■ SPECIFICATION

- Voltage rating: 100V AC, DC
- Current Rating: 2.0A, AC, DC
- Withstand voltage: 500V AC/minute
- Contact resistance: 20mΩ max
- Temperature range: -40° C ~ +105° C
- Insulation resistance: 500MΩ min

## ■ HOUSING

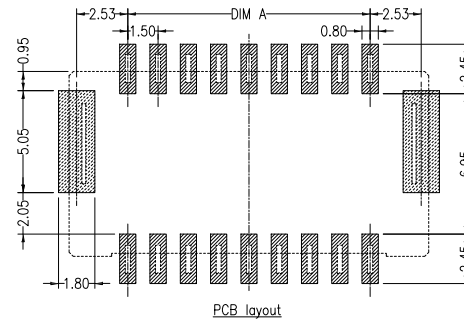
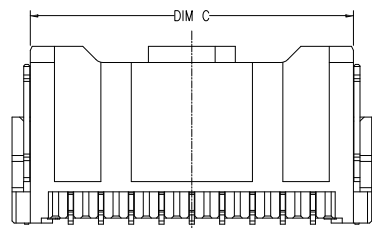
- Material: LCP UL 94V-0
- Color: Nature
- Pin: Copper alloy/Matte Sn
- Solder: Copper alloy/Matte Sn



JVT1503WLP-2\*XXSWC-S

Logo ————  
 Series NO. ————  
 Wafer ————  
 LCP UL94V-0 ————

————— S-SMT  
 ———— C-Cap  
 ———— SW-Matte Tin plating  
 ———— Pin NO.



Poles	DIM A	DIM B	DIM C
2*04	4.50	10.30	8.50
2*05	6.00	11.80	10.00
2*06	7.50	13.30	11.50
2*07	9.00	14.80	13.00
2*08	10.50	16.30	14.50
2*09	12.00	17.80	16.00
2*10	13.50	19.30	17.50
2*11	15.00	20.80	19.00
2*12	16.50	22.30	20.50
2*13	18.00	23.80	22.00

GENERAL TOLERANCE	
0	±0.40
.0	±0.35
.00	±0.25
.000	±0.15

**JVT** 乔业连接器  
**JVT CONNECTORS**  
 CONNECTORS

Approved by	Check	Design	Standard	1.5mm Double row WAFER 180° SMT		
LI	CLYDE	LU	P/N	JVT1503WLP-2*XXSWC-S		
			Map title	141	Version	A0

Version	Content of change	Date	Signature	Unit	mm	Scale	1:1	Date	20210922
A	B	C	D	E	F	G	H		