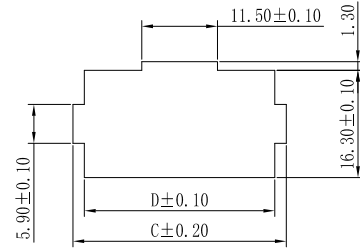
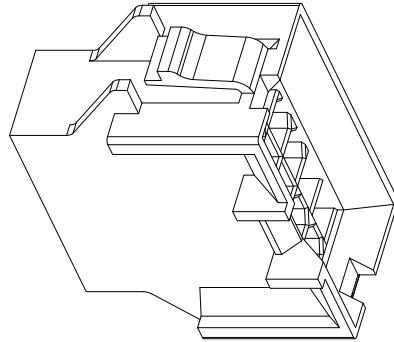
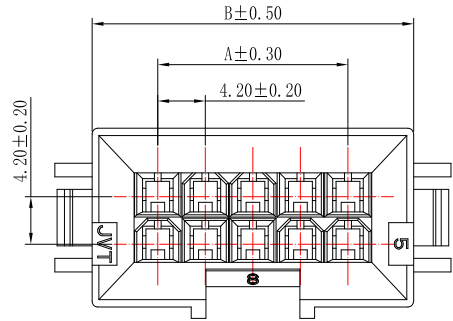


RoHS

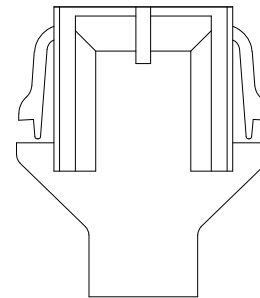
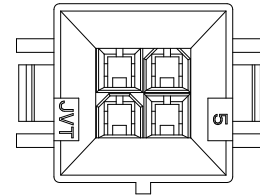
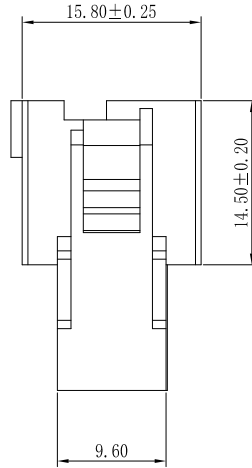
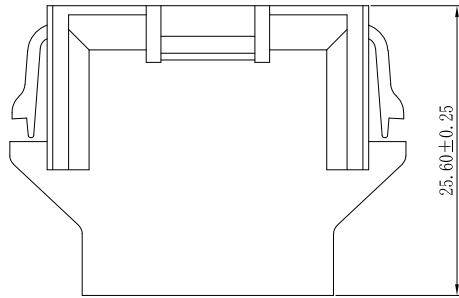


RECOMMENDED PCB CUTOUT
PANET THICKNESS 1.60

SPECIFICATION

- Voltage rating: 600V AC, DC
- Current Rating: 9A, AC, DC
- Withstand voltage: 1500V AC/minute
- Contact resistance: 10mΩ Max
- Insulation resistance: 1000MΩ min
- Temperature range: -40°C ~ +105°C
- Material: Base: Nylon 66 UL94V-0/2 (Natural)
- Suitable JVT1148T series TER

JVT4201HXX-2*XXW
 Logo _____
 Series NO. _____
 Housing _____
 Female HSG
 Single row Pin NO.
 N2-PA66 UL94V-2
 N0-PA66 UL94V-0



2*02P



Poles	Dimension (mm)			
	A	B	C	D
2*01	----	11.60	15.60	12.10
2*02	4.20	15.80	19.80	16.30
2*03	8.40	20.00	24.00	20.50
2*04	12.60	24.20	28.20	24.70
2*05	16.80	28.40	32.40	28.90
2*06	21.00	32.60	36.60	33.10
2*07	25.20	36.80	40.80	37.30
2*08	29.40	41.00	45.00	41.50
2*09	33.60	45.20	49.20	45.70
2*10	37.80	49.40	53.40	49.90
2*11	42.00	53.60	57.60	54.10
2*12	46.20	57.80	61.80	58.30

Version		Content of change		Date	Signature	GENERAL TOLERANCE 0 ±0.35 .0 ±0.30 .00 ±0.20 .000 ±0.10		JVT 乔业连接器 JVT CONNECTORS CONNECTORS			Unit	mm	Scale	1:1	Date	20190426	Approved by	LI	Check	CLYDE	Design	LU	Standard	4.2mm Female HSG	
																						P/N	JVT4201HXX-2*XXW		
																						Map title	031	Version	A1