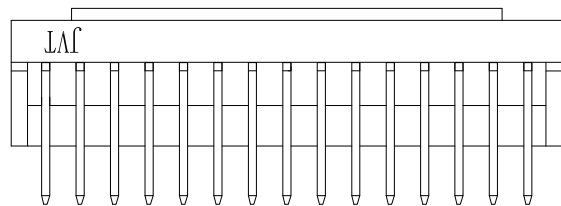
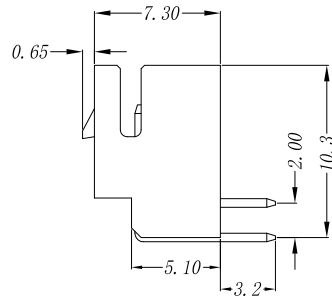
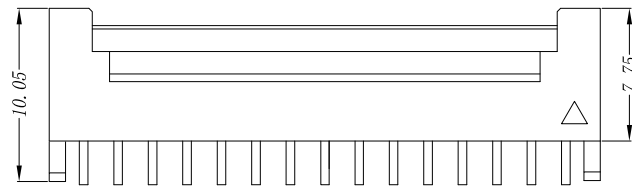
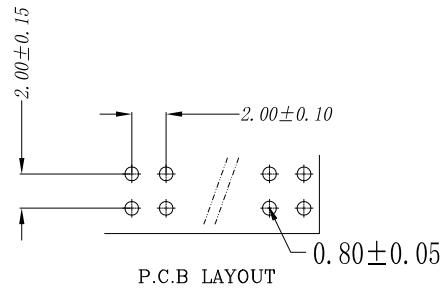
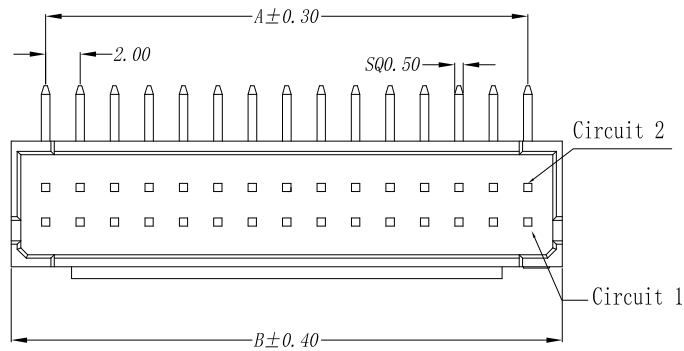


RoHS



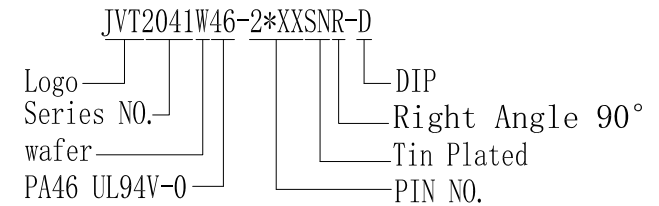
■ Specifications

- Voltage rating: 250V AC/ DC
- Current rating: 3A AC/ DC
- Withstanding Voltage: 1000V AC/minute.
- Insulation resistance: 1000MΩ Min.
- Temperature range: -40° C ~ +105° C
- Contact resistance: Initial Value/30mΩ Max.

■ Wafer

- Part No. : JVT2041W46-2*XXSNR-D
- Poles : 04-50
- Material: Nylon 46 UL 94V-0
Pin: Brass/Tin-Plated

- Mates With Part(s):
JVT2041 Crimp Housing and Terminal



PIN	"A"	"B"	PIN	"A"	"B"
2*02	2.00	6.00	2*14	26.00	30.00
2*03	4.00	8.00	2*15	28.00	32.00
2*04	6.00	10.00	2*16	30.00	34.00
2*05	8.00	12.00	2*17	32.00	36.00
2*06	10.00	14.00	2*18	34.00	38.00
2*07	12.00	16.00	2*19	36.00	40.00
2*08	14.00	18.00	2*20	38.00	42.00
2*09	16.00	20.00	2*21	40.00	44.00
2*10	18.00	22.00	2*22	42.00	46.00
2*11	20.00	24.00	2*23	44.00	48.00
2*12	22.00	26.00	2*24	46.00	50.00
2*13	24.00	28.00	2*25	48.00	52.00



Version		Content of change		Date	Signature	<table border="1"> <tr> <th colspan="2">GENERAL TOLERANCE</th> </tr> <tr> <td>0</td> <td>±0.35</td> </tr> <tr> <td>.0</td> <td>±0.30</td> </tr> <tr> <td>.00</td> <td>±0.20</td> </tr> <tr> <td>.000</td> <td>±0.10</td> </tr> </table>		GENERAL TOLERANCE		0	±0.35	.0	±0.30	.00	±0.20	.000	±0.10	Unit	mm	Scale	1:1	Date	20140726	Approved by	LI	Check	CLYDE	Design	LU	Standard	2.0mm 90° WAFER DIP PA46
GENERAL TOLERANCE																															
0	±0.35																														
.0	±0.30																														
.00	±0.20																														
.000	±0.10																														
														P/N	JVT2041W46-2*XXSNR-D																
														Map title	031	Version	A0														

