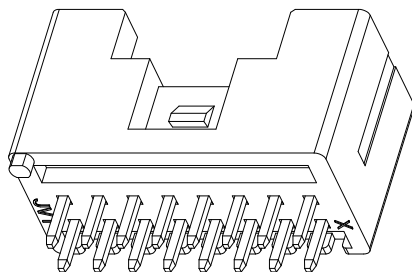
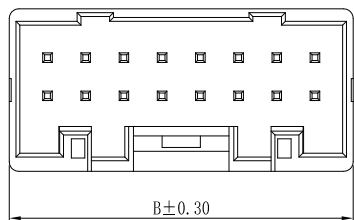


RoHS

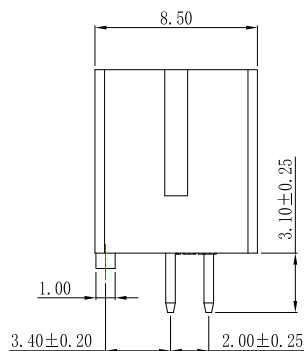
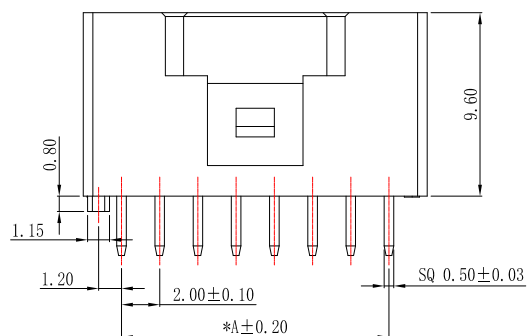


■ Specifications

- Voltage rating: 250V AC/ DC
- Current rating: 3A AC/ DC
- Withstanding Voltage: 800V AC/minute.
- Insulation resistance: 1000MΩ Min.
- Temperature range: -40°C ~ +105°C
- Contact resistance: 20mΩ Max.

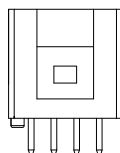
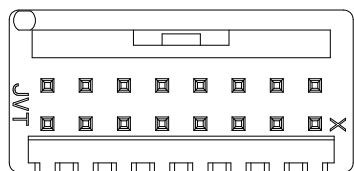
■ Wafer

- Material: PA46 UL 94V-0 (Beige)
- Pin: Brass/Tin-Plated

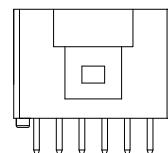


JVT2060W46-2\*XXSNP-D

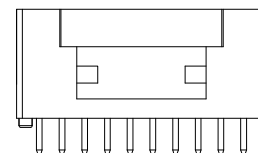
Logo  
Series NO.  
Wafer PA46 UL94V-0  
D-DIP  
P-With boss  
SN-Tin Plated  
Pin NO.



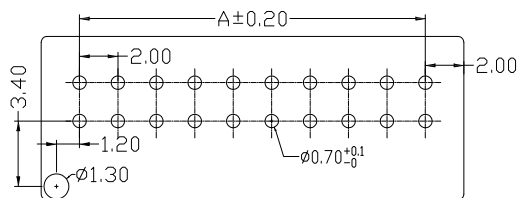
04P~10P



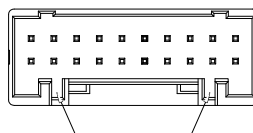
12P~18P



20P~40P



P. C. B LAYOUT



04P~10P Without Guideway  
12P~40P With Guideway



CKL	A	B	CKL	A	B
2*02	2.00	6.00	2*12	22.00	26.00
2*03	4.00	8.00	2*13	24.00	28.00
2*04	6.00	10.00	2*14	26.00	30.00
2*05	8.00	12.00	2*15	28.00	32.00
2*06	10.00	14.00	2*16	30.00	34.00
2*07	12.00	16.00	2*17	32.00	36.00
2*08	14.00	18.00	2*18	34.00	38.00
2*09	16.00	20.00	2*19	36.00	40.00
2*10	18.00	22.00	2*20	38.00	42.00
2*11	20.00	24.00			

Version	Content of change	Date	Signature				Unit	mm	Scale	1:1	Date	20220123	Approved by	LI	Check	CLYDE	Design	LU	Standard	2.0mm DIP WAFER
													P/N		JVT2060W46-2*XXSNP-D					
													Map title		031	Version	A0			

A

B

C

D

E

F

G

H