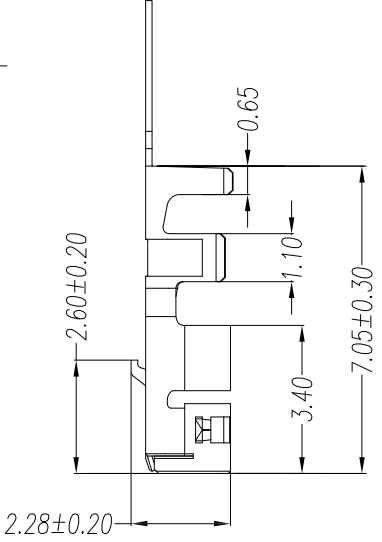
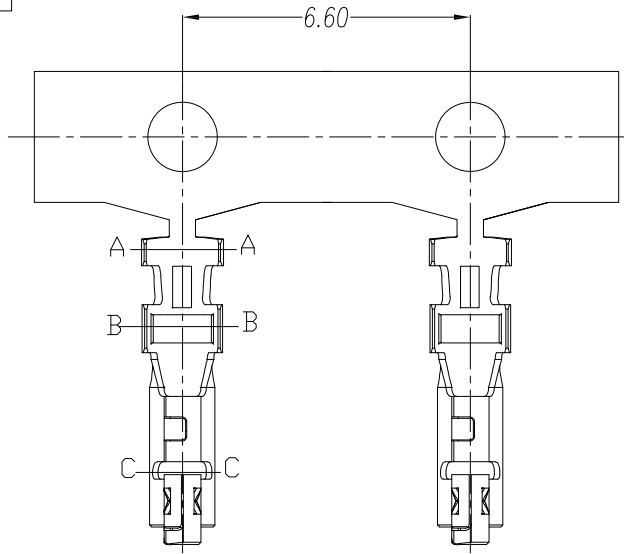


RoHS

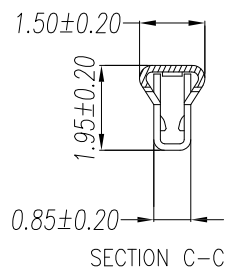
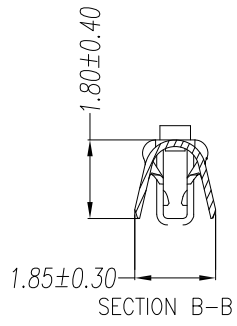
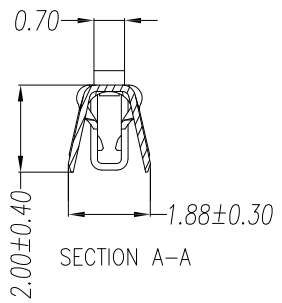
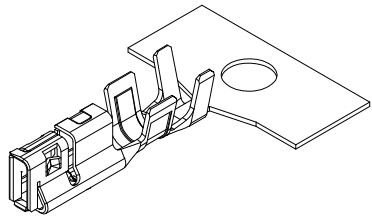
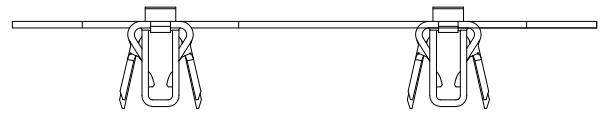


- Terminal
- Material: Phosphor Bronze
  - Finish: Tin plated
  - Wire Range: 22AWG-28AWG
  - O' D: 1.40mm MAX

JVT2076TP-SNS

Logo  
Series NO.  
T-Terminal  
P-Phosphor  
bronze

S-Stamping  
before Plating  
SN-Tin Plated



			GENERAL TOLERANCE			Approved by		Check	Design	Standard	2.0mm TER												
			0 ±0.35			LI		CLYDE	LU	P/N	JVT2076TP-SNS												
			.0 ±0.30			Unit		mm	Scale	1:1	Date	20141011	Map title	141	Version	A0							
Version			Content of change			Date			Signature														
A			B			C			D			E			F			G			H		

