

Instruction manual

USB-C to RJ45 Consonle Cable



Dongguan Aiqun Industrial Co.,Ltd

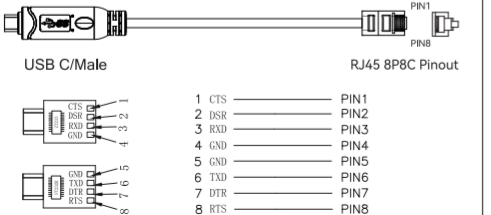
Preface

Thank you for purchasing OIKWAN products. For optimum operation, please read this manual carefully before use.

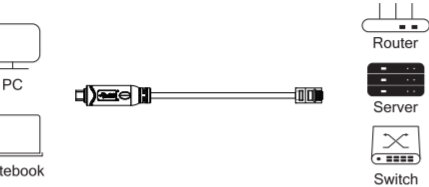
Introduction

USB-C to RJ45 console cable can connect the USB-C port of your computer or laptop to your modem, router, firewall, switch or other devices with a console port. It supports HUAWEI, ZTE, TP-LINK and D-link Routers/Switches etc. Built-in FT232RL chip for high stability and multiple operating systems supported.

Product Details



How it Works



Driver Installation

The product is driver-free for Windows 7 and above. If the system can't install drivers correctly or we are now using other operating systems, we need to install drivers manually. Driver's download link from FTDI official website: <http://www.ftdichip.com/drivers/Vcp.htm>
Installation guidance: <http://www.ftdichip.com/Support/documents/Installguides.htm>

Step 1: Navigate to the Drivers-FTDI official website and select "VCP Drivers" in the navigation bar



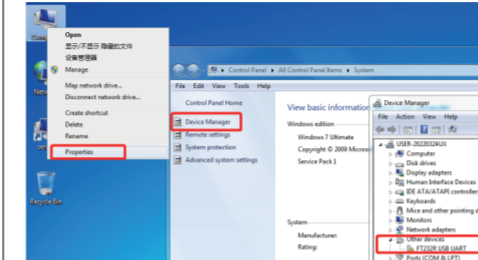
Step 2: Select the driver according to your system, and then download it.

Currently Supported VCP Drivers:

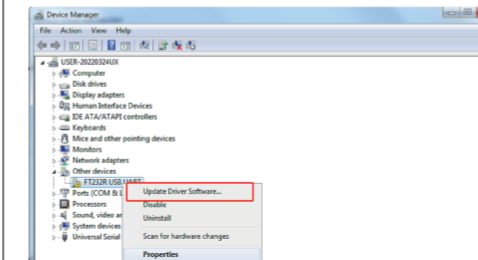
[Subscribe to Our Driver Updates](#)

Operating System	Release Date	X86 (32-Bit)	X64 (64-Bit)	PPC
Windows (Desktop)*	2021-07-15	2.12.36.4	2.12.36.4	-
Windows (Universal)**	2021-11-12	2.12.36.4U	2.12.36.4U	-
Linux	-	-	-	-
Mac OS X 10.3 to 10.8	2012-08-10	2.2.18	2.2.18	2.2.18

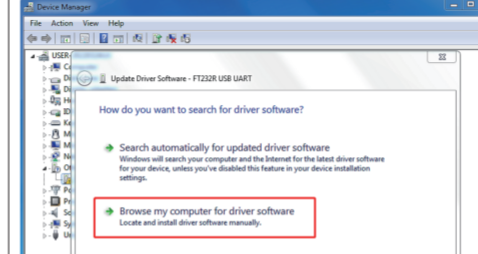
Step 3: Right click "computer", and then left click "Properties" and "Device Manager". Here you can see the faulty hardware with exclamation point.



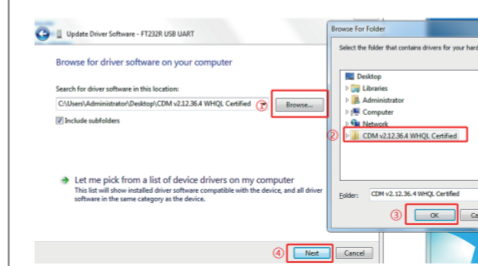
Step 4: Right click "FT232R USB UART", and then left click "Upgrade driver software".



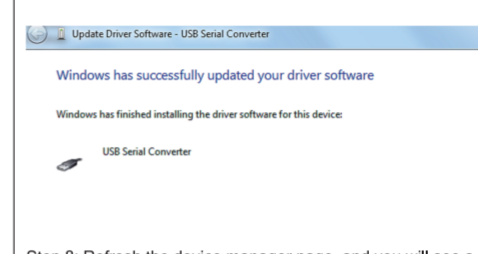
Step 5: Left click "Browse my computer for driver software".



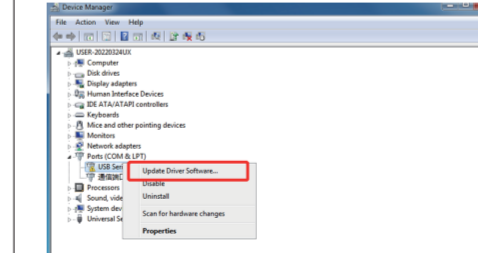
Step 6: Left click "browse" and locate the driver folder. Then left click "OK" and "Next".



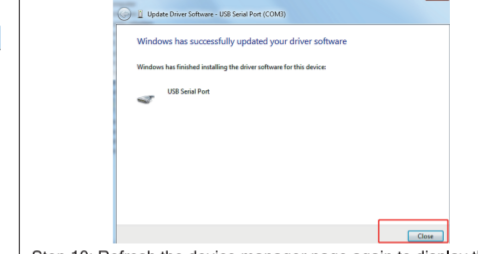
Step 7: After installation, you will see a successful message! Left click "Close".



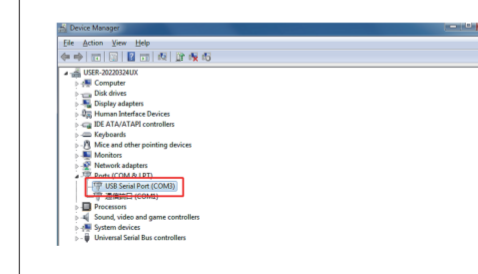
Step 8: Refresh the device manager page, and you will see a new project "USB Serial Port" with exclamation point. Now you need to install a second driver from the same driver folder according to the 4-6 steps.



Step 9: After completing these steps, you will see another successful message! Left click "Close".



Step 10: Refresh the device manager page again to display the USB Serial Port (COMxx) where xx is a number. Congratulations, you have the right FTDI driver now and can start using your device.



Specifications

- Input: USB C Male
- Output: RJ45 connector compliant with RS232 serial protocol standard .
- Supports remote wake-up and power management.
- Supports Window/Mac OS/Linux

Notes

- Don't press external force on this unit.
- Don't expose this unit to moisture or water environment.
- Don't modify, repair or disassemble the product.

Package List

- 1xUSB-C to RJ45 Console Cable
- 1xUser Manual
- 1xCertificate