

Instruction manual

USB to RJ45 Console Cable



Dongguan Aiqun Industrial Co.,Ltd

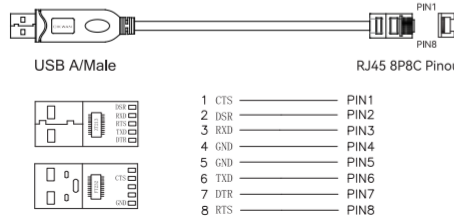
Preface

Thank you for purchasing OIKWAN products. For optimum operation, please read this manual carefully before use.

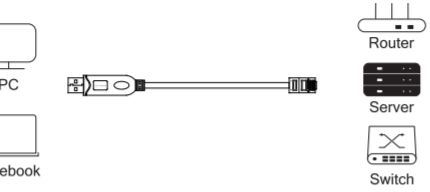
Introduction

USB to RJ45 console cable can connect the USB port of your computer or laptop to your modem, router, firewall, switch or other device with a console port. It supports HUAWEI, ZTE, TP-LINK and D-link Routers/Switches etc. Built-in FT232RL chip for high stability and multiple operating systems supported.

Product Details



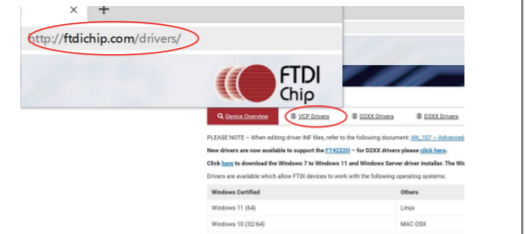
How it Works



Driver Installation

The product is driver-free for Windows 7 and above. If the system can't install drivers correctly or we are now using other operating systems, we need to install drivers manually. Driver's download link from FTDI official website: <http://www.ftdichip.com/drivers/Vcp.htm>
Installation guidance: <http://www.ftdichip.com/Support/documents/Installguides.htm>

Step 1: Navigate to the Drivers-FTDI official website and select "VCP Drivers" in the navigation bar



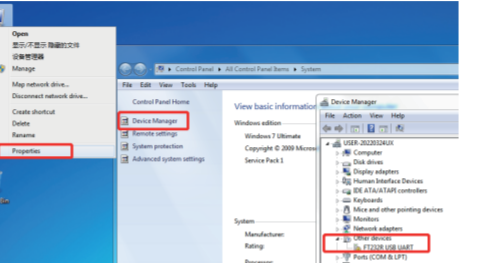
Step 2: Select the driver according to your system, and then download it.

Currently Supported VCP Drivers:

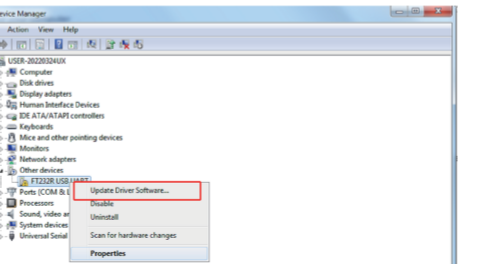
[Subscribe to Our Driver Updates](#)

Operating System	Release Date	X86 (32-Bit)	X64 (64-BIT)	PPC
Windows (Desktop)*	2021-07-15	2.12.36.4	2.12.36.4	-
Windows (Universal)***	2021-11-12	2.12.36.4U	2.12.36.4U	-
Linux	-	-	-	-
Mac OS X 10.3 to 10.8	2012-08-10	2.2.18	2.2.18	2.2.18

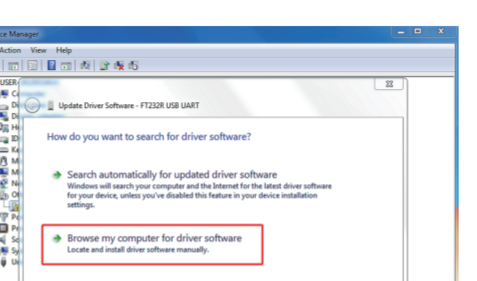
Step 3: Right click "computer", and then left click "Properties" and "Device Manager". Here you can see the faulty hardware with exclamation point.



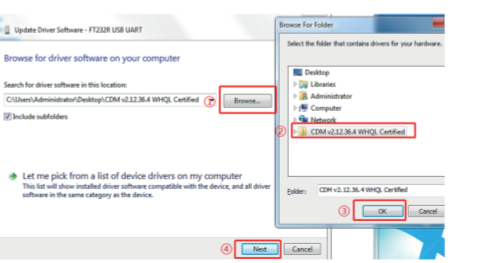
Step 4: Right click "FT232R USB UART", and then left click "Upgrade driver software".



Step 5: Left click "Browse my computer for driver software".



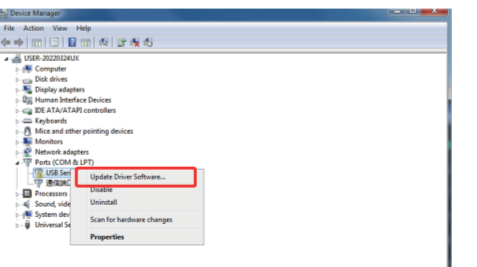
Step 6: Left click "browse" and locate the driver folder. Then left click "OK" and "Next".



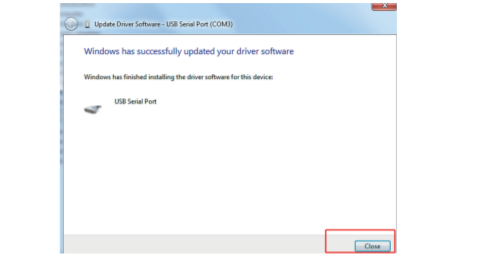
Step 7: After installation, you will see a successful message! Left click "Close".



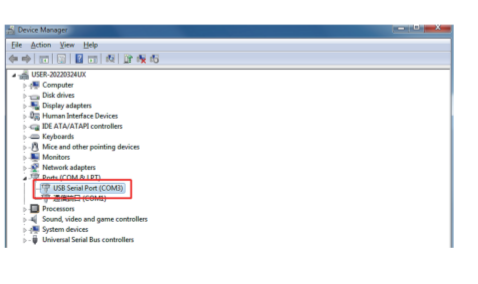
Step 8: Refresh the device manager page, and you will see a new project "USB Serial Port" with exclamation point. Now you need to install a second driver from the same driver folder according to the 4-6 steps.



Step 9: After completing these steps, you will see another successful message! Left click "Close".



Step 10: Refresh the device manager page again to display the USB Serial Port (COMxx) where xx is a number. Congratulations, you have the right FTDI driver now and can start using your device.



Specifications

- Input: USB 2.0 A/Male compliant with USB2.0 specification backward compatible with USB1.1.
- Output: RJ45 connector compliant with RS232 serial protocol standard.
- Supports remote wake-up and power management.
- Supports Window/Mac OS/Linux

Notes

- Don't press external force on this unit.
- Don't expose this unit to moisture or water environment.
- Don't modify, repair or disassemble the product.

Package List

- 1xUSB to RJ45 Console Cable
- 1xUser Manual
- 1xCertificate