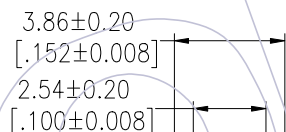
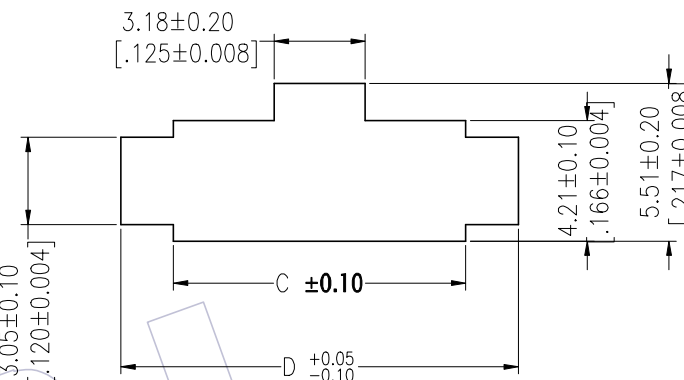
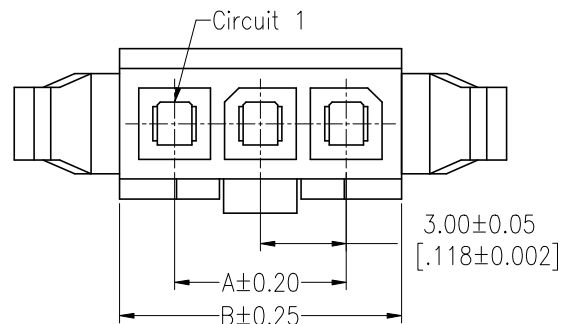


HSF

NOTES:
 Rated Current:5.0A
 Contact Resistance:20mΩ max
 Withstand Voltage:1500V AC/Minute
 Insulation Resistance:1000MΩ min
 Operation Temperature:-25℃ to+105℃

Insulator Material:PA66 UL94V-0
 Use with:WF3001-MT (Male Contact)

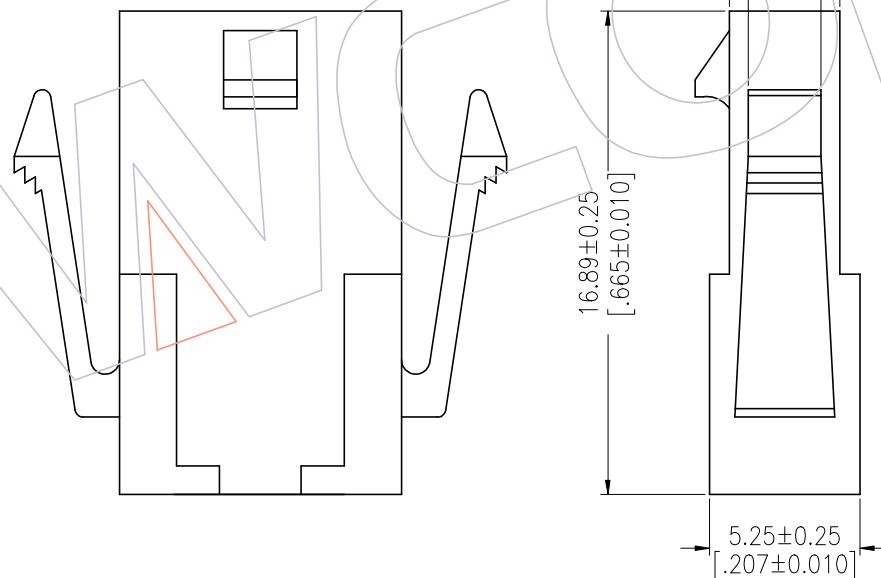


RECOMMENDED PANEL CUT-OUT

Ordering Information

WF 3001 - 1 H K XX B 0 1

No. of row Single Row
 No. of pins 02~12pin
 Color E=Beige W=White B=Black
 Packing 0=PE Bag



Circuit	Part No.	Dimension			
		A	B	C	D
02	WF3001-1HK02B01	3.00	6.85	7.21	10.90
03	WF3001-1HK03B01	6.00	9.85	10.21	13.89
04	WF3001-1HK04B01	9.00	12.85	13.21	16.89
05	WF3001-1HK05B01	12.00	15.85	16.21	19.89
06	WF3001-1HK06B01	15.00	18.85	19.21	22.89
07	WF3001-1HK07B01	18.00	21.85	22.20	25.88
08	WF3001-1HK08B01	21.00	24.85	25.20	28.88
09	WF3001-1HK09B01	24.00	27.85	28.20	31.88
10	WF3001-1HK10B01	27.00	30.85	31.22	34.87
11	WF3001-1HK11B01	30.00	33.85	34.22	37.87
12	WF3001-1HK12B01	33.00	36.85	37.22	40.87

		OPERATION		DRAW GH	DATE 2022/05/18	SCALE	FIT	PART NO. SEE TAB	 Http: www.wcon.com
		x.X	±0.40						
A1	2022/05/18	Update drawing		GH					
AO	2012/09/20	NEW							
REV	DATE	MODIFICATION DESCRIPTION		CHANGE	DATE	SHEET 1/2	PROJ.	Customer NO.	WCON-Dongguan Tel: +86 769 85358920 Fax: +86 769 85358915 E-mail: sales@wcon.com

WCON-Kunshan
 Tel: +86 512 57468408
 Fax: +86 512 57468468
 E-mail: salesks@wcon.com